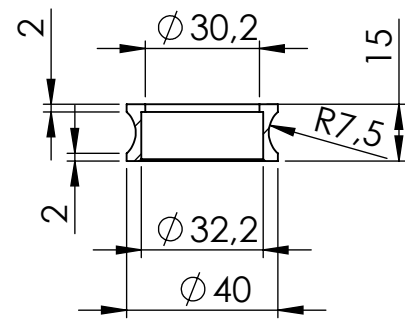


Flange aluminium. sp.8  
cod.206606



Bushing s.s.  
cod.206607

Allen screw M5X6  
T.C.E.I.  
Cod.201044

Db-Killer Ø 22  
Cod.303430801

GP CORSA  
Øi 54X240 RHS  
Cod.303457473

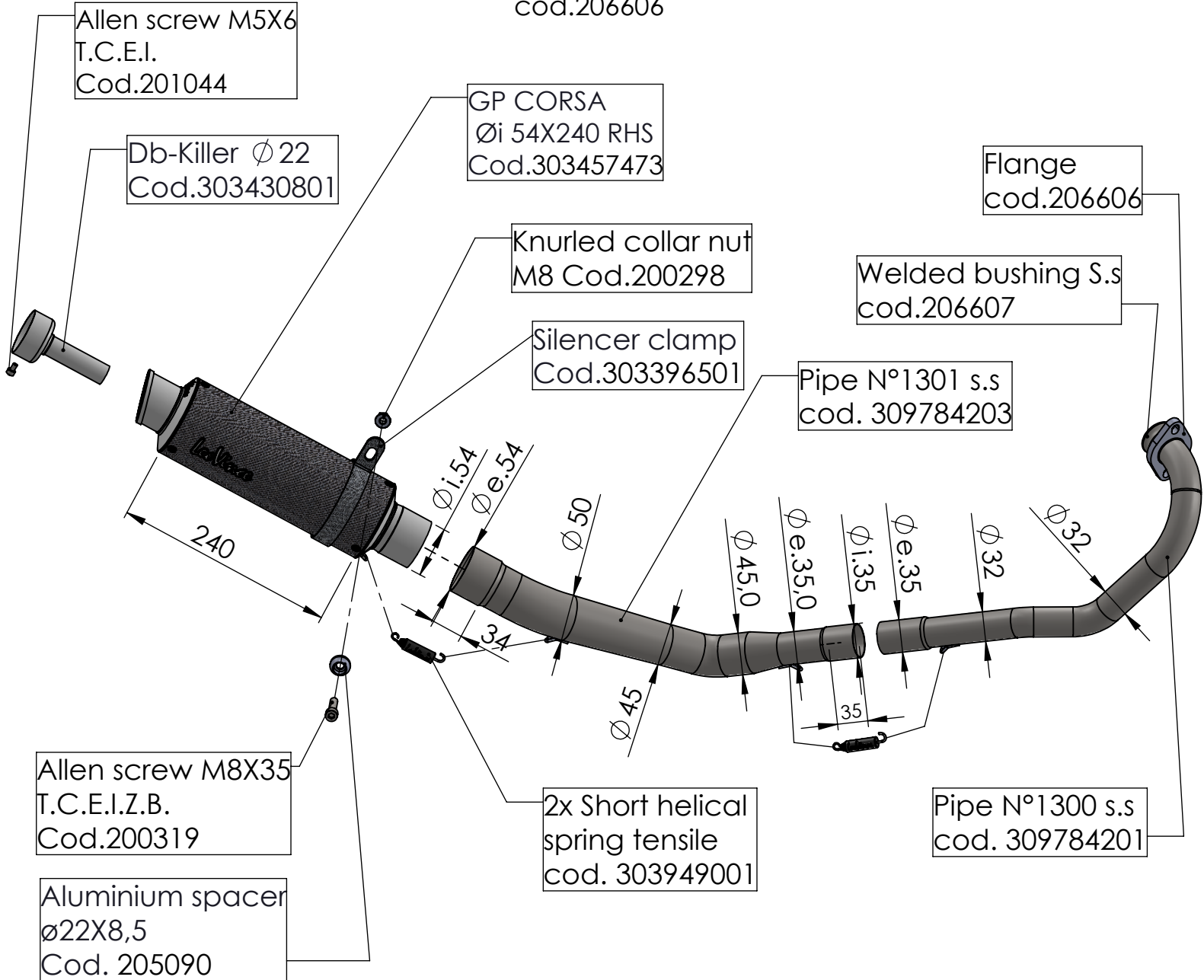
Knurled collar nut  
M8 Cod.200298

Silencer clamp  
Cod.303396501

Pipe N°1301 s.s.  
cod. 309784203

Flange  
cod.206606

Welded bushing S.s.  
cod.206607



Allen screw M8X35  
T.C.E.I.Z.B.  
Cod.200319

Aluminium spacer  
Ø22X8,5  
Cod. 205090

2x Short helical  
spring tensile  
cod. 303949001

Pipe N°1300 s.s.  
cod. 309784201

### WARNING

it is advisable to optimize the carburation by remapping the stock ECU or by adopting an additional ECU unit.

## ART. 9784C

YAMAHA EXCITER 150 FI

FULL SYSTEM - GP CORSA - CARBON