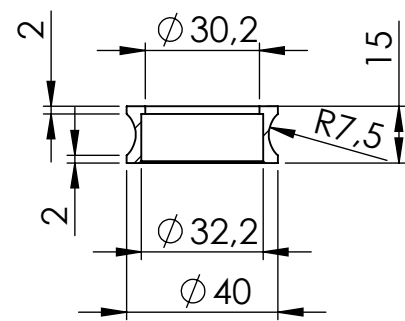


Flange 206606
aluminium. sp.8



Bushing 206607

Allen screw M5X6
T.C.E.I.
Cod.201044

Db-Killer Ø 22
Cod.303430801

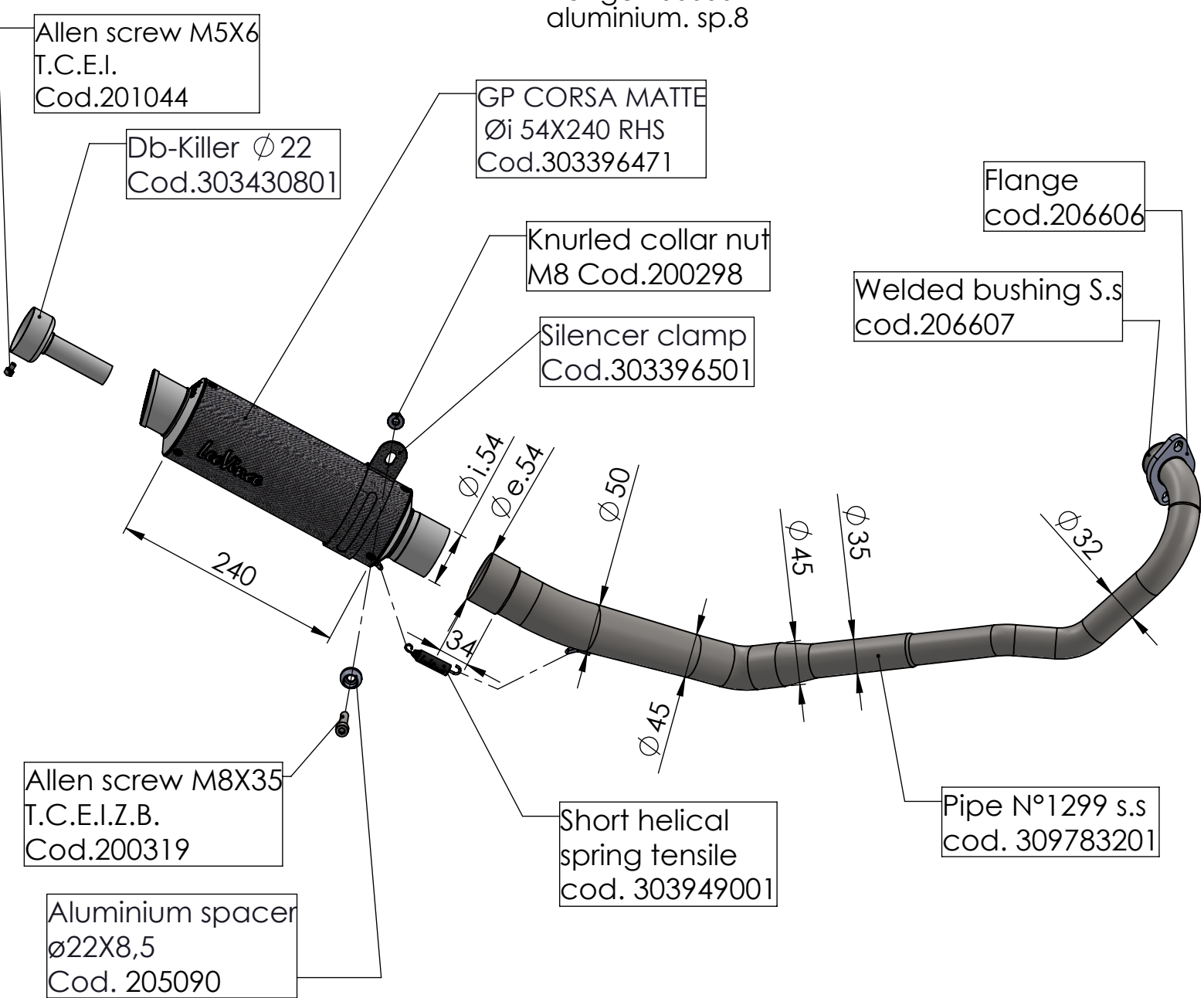
GP CORSA MATTE
Øi 54X240 RHS
Cod.303396471

Knurled collar nut
M8 Cod.200298

Silencer clamp
Cod.303396501

Flange
cod.206606

Welded bushing S.s
cod.206607



Allen screw M8X35
T.C.E.I.Z.B.
Cod.200319

Aluminium spacer
Ø22X8,5
Cod. 205090

Short helical
spring tensile
cod. 303949001

Pipe N°1299 s.s
cod. 309783201

WARNING

it is advisable to optimize the carburation by remapping the stock ECU or by adopting an additional ECU unit.

ART. 9783M

YAMAHA EXCITER 150 FI

FULL SYSTEM - GP CORSA MATTE - CARBON