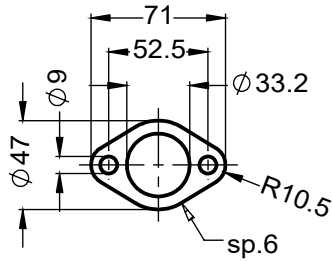
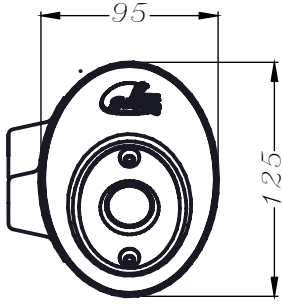


VISTA DA "A"

VISTA DA "B"

Flangia "43T" cod.206635



3 Plain washer  $\phi 8 \times \phi 24$   
Cod.200321

3x grower  $\phi 8 \times 14$   
Cod.200361

3 Plain washer  $\phi 10 \times \phi 20$   
Cod.203518

3 grower  $\phi 10$   
Cod.200349

3x allen screw  
M8 x 30  
Cod.203335

3x allen screw  
M10x1.25 h 30  
Cod.406393

2x Plain washer  
 $\phi 8 \times \phi 17$   
Cod.200294

2x allen screw  
M8x16  
Cod.200360

Bracket S.s  
Cod.304108502

Knurled collar nut  
M8 Cod.200298

Gasket  
 $\phi e.33 \phi i.26.1 h.4$   
Cod.201525

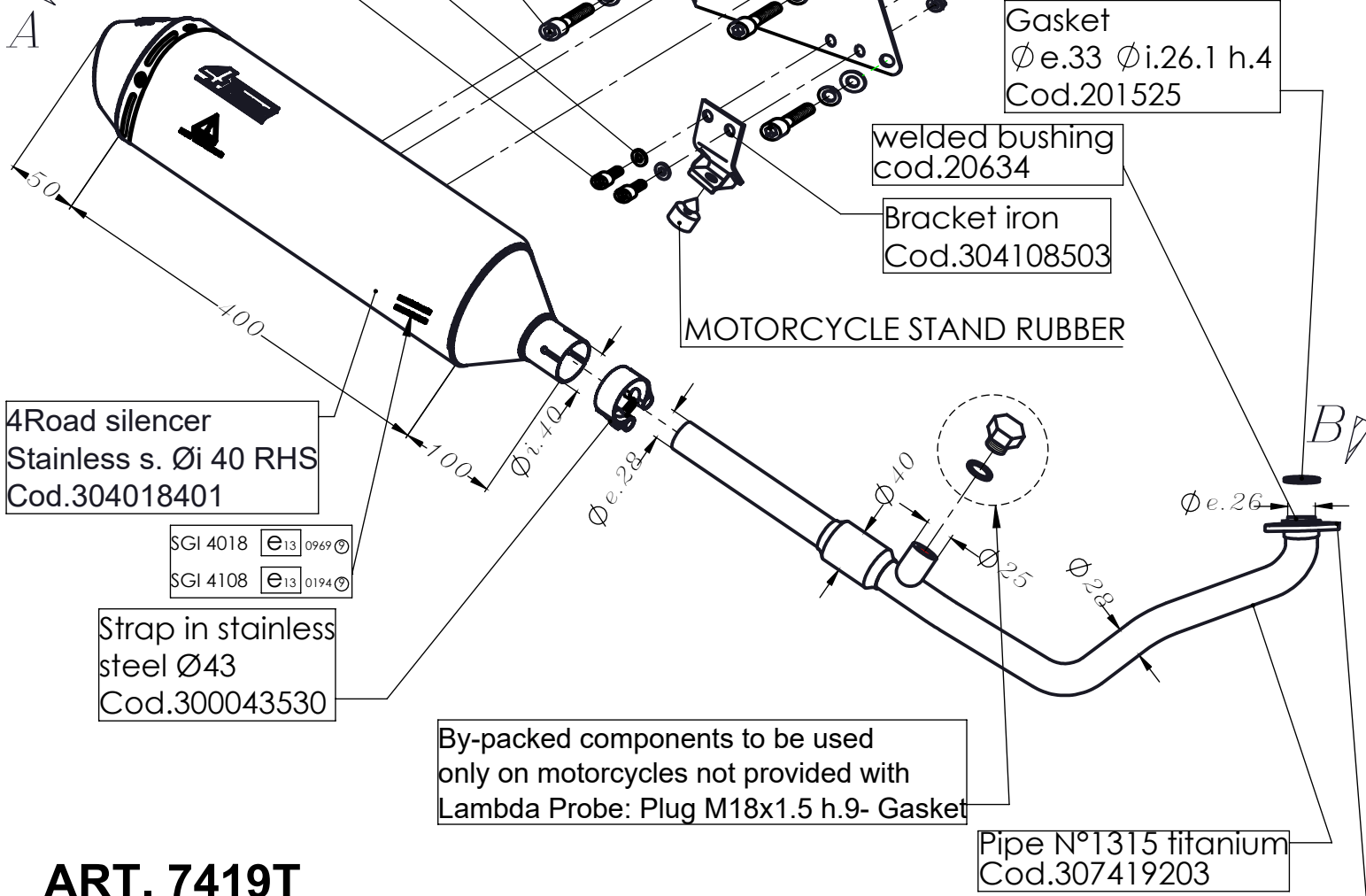
welded bushing  
cod.20634

Bracket iron  
Cod.304108503

MOTORCYCLE STAND RUBBER

A

B



4Road silencer  
Stainless s.  $\phi i 40$  RHS  
Cod.304018401

SGI 4018  $\phi 13 \phi 0969$   
SGI 4108  $\phi 13 \phi 0194$

Strap in stainless  
steel  $\phi 43$   
Cod.300043530

By-packed components to be used  
only on motorcycles not provided with  
Lambda Probe: Plug M18x1.5 h.9- Gasket

Pipe N°1315 titanium  
Cod.307419203

Flange titanium  
Cod.206635

**ART. 7419T**

HONDA SH 125i / 150i

FULL SYSTEM - 4ROAD - STAINLESS STEEL