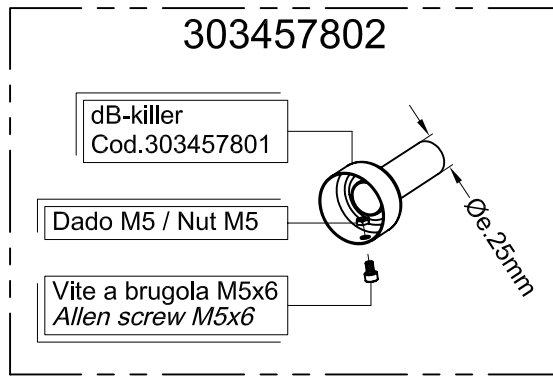
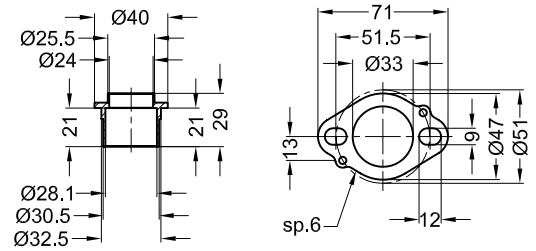


## Vista da "A"



## Vista "B"

Boccole "205296" Flange "138A"



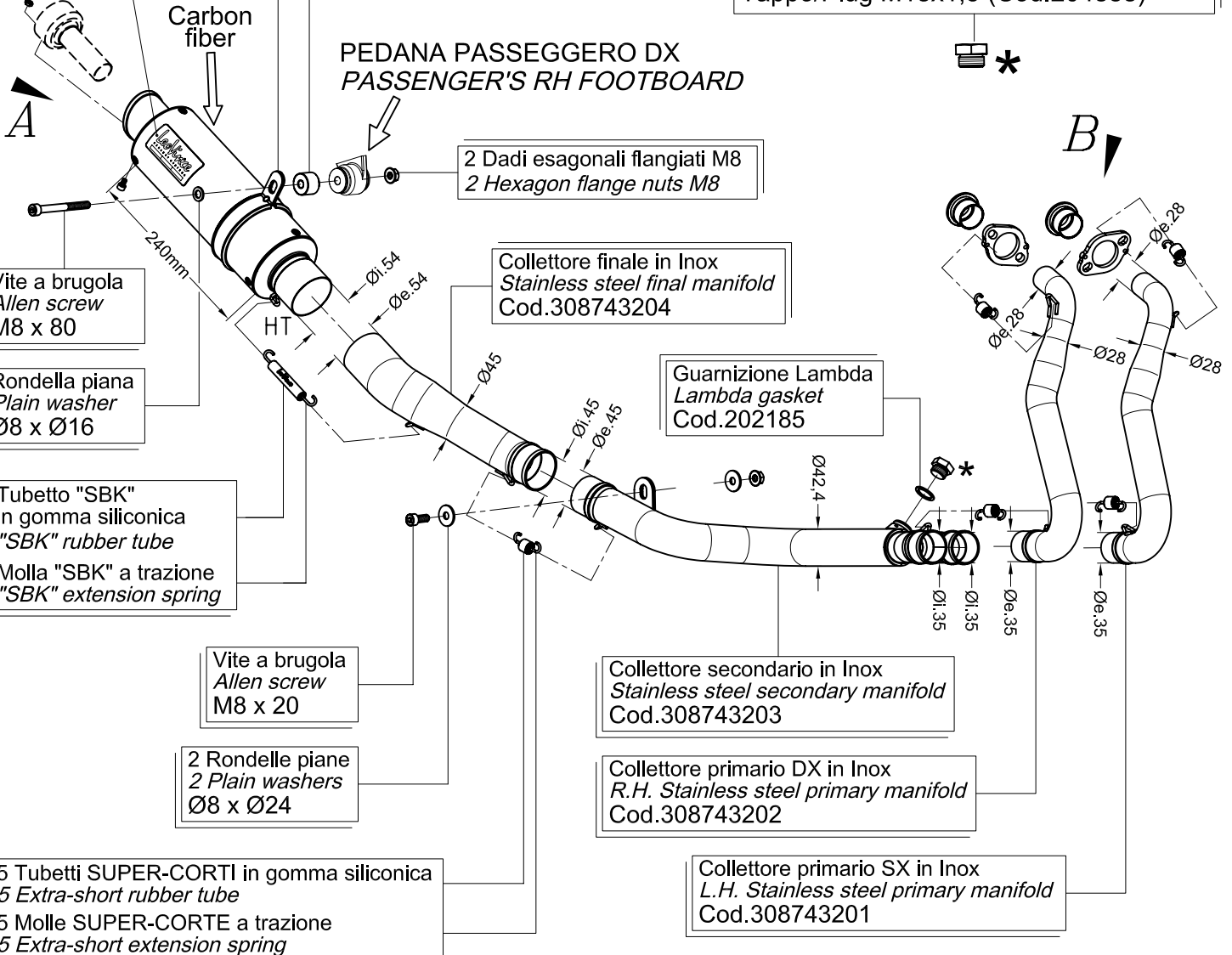
Targhetta metallica adesiva  
Sticky metal label  
Cod.416918



.Staffa-corpo in Inox  
.Stainless steel band  
.Guaina nera in gomma  
.Black rubber sheath  
Cod.303439501

Distanziale in Alluminio  
Aluminium spacer  
Øe.25 Øi.8,5 h.18

Componente fornito in confezione e da utilizzare  
sulle motociclette non dotate di sonda Lambda :  
By-packed component to be used only on  
motorcycles not provided with Lambda probe :  
Tappo/Plug M18x1,5 (Cod.204888)



Vite a brugola  
Allen screw  
M8 x 80

Rondella piana  
Plain washer  
Ø8 x Ø16

.Tubetto "SBK"  
in gomma silconica  
."SBK" rubber tube  
.Molla "SBK" a trazione  
."SBK" extension spring

Vite a brugola  
Allen screw  
M8 x 20

2 Rondelle piane  
2 Plain washers  
Ø8 x Ø24

.5 Tubetti SUPER-CORTI in gomma silconica  
.5 Extra-short rubber tube  
.5 Molle SUPER-CORTE a trazione  
.5 Extra-short extension spring

Art.3296

Impianto completo 2/1 LeoVince "GP Corsa" - Carbonio - RACING per

KAWASAKI NINJA 300 i.e. ('13)