



MONTAGEANLEITUNGEN

BESTANDTEILE-LISTE:

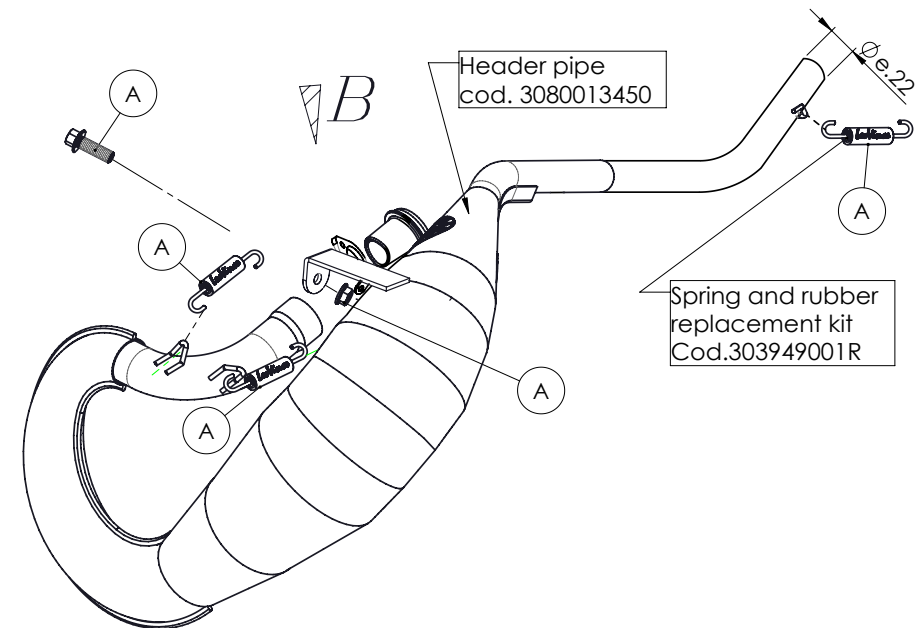
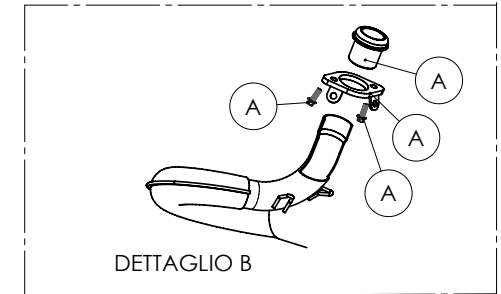
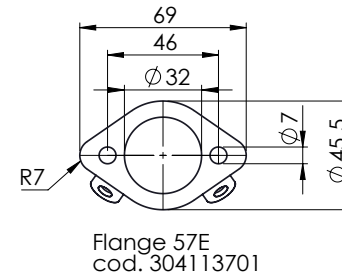
Maßgeblich ist die in diesem Heft enthaltene Komponentenliste und die Zeichnung des Produktes.

VORSICHTSMASSNAHMEN:

Bitte vergewissern Sie sich vor jeder Benutzung, daß die Oberflächentemperatur der Auspuffanlage keine Gefahr für den Benutzer bzw. für die nicht hitzebeständigen Teile (Verkleidungen, Leitungen, Ummantelungen usw.) darstellt.

MONTAGE:

1. Entfernen Sie die hintere linke Seitenverkleidung.
2. Entfernen Sie die gesamte Original-Auspuffanlage.
3. Die Buchse (Art.Nr. 201248) in die dafür vorgesehene Position an den Zylinder einsetzen, den Flansch (Art.Nr. 304113701) in die richtige Position setzen und die Schrauben gemäß dem vom Hersteller angegebenen Drehmoment festziehen.
4. Den Krümmer in die zuvor montierte Buchse einsetzen, auf richtige Ausrichtung prüfen und durch die beigefügten Federn an dem Flansch befestigen.
5. Montieren Sie den LeoVince Slip-On und bauen Sie die hintere linke Seitenverkleidung wieder ein.



WARNING
it is advisable to optimize the carburation by remapping

ART. 80013 - SPARE PARTS

DERBY SENDA SM X-TREME / RACING / LIMITED / X-TREME R
APRILIA SX 50/FACTORY - RX 50/FACTORY
(Compatible with LeoVince exhaust only ART.17001)
(DOES NOT FIT WITH STOCK SILENCER)

(A) KITTING FIT cod.3080013601R



NOTICE DE MONTAGE

LISTE DES PIÈCES FOURNIES:

Se référer à la liste des pièces et au croquis du produit inclus dans cette notice .

ATTENTION:

Avant d'effectuer toute opération, vérifier que le pot d'échappement est bien froid afin d'éviter toute brûlure et toute détérioration aux pièces (carénage, tubes, gaines, etc.).

MONTAGE:

1. Retirer la plaque latérale de carénage côté arrière gauche.
2. Enlever tout le système d'échappement d'origine.
3. Insérer la bague (art.201248) sur la culasse, placer correctement la bride (art.304113701) et serrer les vis en respectant le couple de serrage indiqué par le constructeur.
4. Emboîter le collecteurs dans la bague précédemment montée, vérifier vérifier leur orientation correcte et le fixer à la bride avec les ressorts fournis.
5. Rémonter le silencieux d'origine et la plaque latérale de carénage côté arrière gauche.

6. Verificare il serraggio della bulloneria, avviare il motore, attendere alcuni minuti che sia raggiunta la temperatura di funzionamento e verificare che non vi siano fughe di gas.

7. Se il montaggio è effettuato correttamente, gli ingombri dei collettori non devono interferire con parti del motore (radiatore, basamento, carene ecc.).

NOTA BENE:

durante i primi km di utilizzo l'impianto di scarico, subirà degli assestamenti ed è possibile che si verifichino minime fughe di gas. Dopo una percorrenza di circa 100 km è necessario effettuare un controllo del serraggio di tutta la bulloneria.

REGOLAZIONE:

la messa a punto di questo silenziatore è stata effettuata nello stabilimento Leovince su banco di prova elettronico con un veicolo in perfetto stato di utilizzo e regolazioni standard.

MANUTENZIONE:

verificare periodicamente gli attacchi del silenziatore e tutti gli elementi che possono deteriorarsi con l'uso (materiale fonoassorbente, guarnizioni e altre parti in gomma) e provvedere alla loro periodica sostituzione. Per la pulizia del silenziatore è possibile utilizzare benzina, gasolio ed alcool. Non possono essere usati solventi di alcun tipo. Un eventuale cambiamento del colore del silenziatore è dato da un utilizzo normale e dipende dalla natura dei materiali e dal calore.

E' VIETATA ogni modifica o manomissione del silenziatore di scarico; qualora eseguita, la Belgrove Sp. z o.o. declina ogni responsabilità derivante da vizi, difetti e cattivo funzionamento del prodotto manomesso o modificato.

É consigliato per il montaggio l'ausilio di personale specializzato



FITTING INSTRUCTION

LIST OF SUPPLIED PARTS:

Refer to the list of components and the product drawing included in this booklet.

WARNING:

before carrying out any work on the exhaust, check that its surface has cooled so that it will not damage components, which are not heat-resistant (such as fairing, hoses, rubber sleeves, etc.), or the operator.

INSTALLATION:

1. Remove the rear left side fairing panel.
2. Remove the entire original exhaust system.
3. Put the bushing (art.201248) into its seat on the cylinder, fit the flange (art.304113701) to the right position, and then tighten the screws by applying the driving torque specified by the manufacturer.
4. Fit the pipe into the previously mounted bushing, check its correct orientation and then secure it to the flange with the supplied springs.
5. Attach pipe to cylinder block, check its correct orientation and secure it with the provided springs.

6. Check the tightening of nuts and bolts. Start the engine, wait a few minutes until the correct running temperature has been reached and check there is no gas leakage.

7. If assembly has been correctly undertaken, the overall dimensions of the manifolds should not interfere with the engine parts (radiator, cylinder block, fairings, etc.).

IMPORTANT:

During the first km of running, the exhaust system needs breaking-in; therefore, slight gas leakage might occur. After approximately 100 Km, check all the fasteners.

ADJUSTEMENT:

This silencer has been developed by Leovince on an electronic dynamometer using a vehicle in perfect condition, and in standard trim

MAINTENANCE:

From time to time, check all the brackets and fasteners, which could be affected by use (sound-deadening material, seals and other rubber parts) and replace them periodically. The silencer may be cleaned using gasoline, diesel oil or alcohol. Absolutely avoid the use of any kind of solvent. It is normal for there to be some discolouration of the silencer, which is the result of heat and the nature of the materials used.

IT IS FORBIDDEN to modify silencers. Whatever form this may take, Belgrove Sp. z o.o. declines any responsibility for defects, problems, or malfunction, arising from the use of any product which has been modified or tampered with.

We suggest the fitting to be made by professionals