



LeoVince

RIDE. DOMINATE. ROAR.

2020 PRODUCT CATALOG



OFFICIAL PARTNER

LEOPARD
RACING

Sic58
SQUADRA
CORSE



LEOVINCE LV-12 TITANIUM

CHOOSE YOUR ADVENTURE

With the new **LV-12 Titanium**, LeoVince has specifically developed an exhaust for adventure bikes and maxi-scooters, combining cutting-edge materials with Made in Italy design, introducing the titanium version for those looking for maximum lightness. The outer sleeve and the bracket of the muffler are made of Titanium Grade 1 with TIG welds, the **LV-12 Titanium** exhaust features a dual flow carbon fiber end-cap, enriched with a matte clear coating for Maximum UV Resistance.

The oversize design makes the **LV-12 Titanium** the perfect fit for adventure motorcycles and maxi-scooters and the laser-etched "LeoVince Titanium" logo gives the exhaust a premium finish, while titanium and carbon fiber make it robust and light. The dynamic and outstanding look makes the **LV-12 Titanium** unmistakable in the urban jungle and ready for any adventure. Choose yours.

FEATURES

- ✓ Entirely Made in Titanium Grade 1
- ✓ Carbon End Cap with Matte Clear Coating for UV Resistance
- ✓ Dual Flow Muffler
- ✓ TIG Welds
- ✓ Laser-Etched "LeoVince Titanium" Logo
- ✓ Laser Cut Bracket
- ✓ ECE Approved



AVAILABLE FOR

BMW

HONDA

KTM

SUZUKI

TRIUMPH



LEOVINCE LV-12

CHOOSE YOUR ADVENTURE

With the new **LV-12**, LeoVince has specifically developed an exhaust for adventure bikes and maxi-scooters, combining cutting-edge materials with Made in Italy design.

Entirely made of AISI 304 stainless steel with TIG welds, the **LV-12** exhaust features a dual flow carbon fiber end-cap, enriched with a matte clear coating for Maximum UV Resistance.

The oversize design makes the **LV-12** the perfect fit for adventure motorcycles and maxi-scooters and the laser-etched LeoVince logo gives the exhaust a premium finish.

With its dynamic and aggressive look, the **LV-12** is unmistakable in the urban jungle and ready for any adventure. Choose yours.

FEATURES

- ✓ AISI 304 Stainless Steel with Matte Finishing
- ✓ Carbon End Cap with Matte Clear Coating for UV Resistance
- ✓ Dual Flow Muffler
- ✓ TIG Welds
- ✓ Laser-Etched LeoVince Logo
- ✓ Laser Cut Bracket
- ✓ ECE Approved



AVAILABLE FOR

BMW

HONDA

KTM

SUZUKI

TRIUMPH

e pass

STAINLESS
STEEL



LEOVINCE

LV-12 BLACK EDITION

ADVENTURE AND MAXISCOOTERS

With the new **LV-12 Black Edition**, LeoVince has specifically developed an exhaust for adventure bikes and maxi-scooters, combining cutting-edge materials with Made in Italy design, introducing the "Black Edition" version for those who love dark tones.

LV-12 Black Edition is entirely made of AISI 304 stainless steel with TIG welding and a black ceramic-based paint, resistant to high temperatures.

The exhaust features a dual flow carbon fiber end-cap, enriched with a matte clear coating for Maximum UV Resistance. The oversize design makes the **LV-12 Black Edition** the perfect fit for adventure motorcycles and maxi-scooters and the laser-etched LeoVince logo gives the exhaust a premium finish.

With its dynamic and elegant look, **LV-12 Black Edition** is unmistakable in the urban jungle, and ready for any adventure. Choose yours.

FEATURES

- ✓ AISI 304 Stainless Steel with Matte Finishing
- ✓ Black Ceramic-Based Painting
- ✓ Carbon End Cap with Matte Clear Coating for UV Resistance
- ✓ Dual Flow Muffler
- ✓ TIG Welds
- ✓ Laser-Etched LeoVince Logo
- ✓ Laser Cut Bracket
- ✓ ECE Approved



AVAILABLE FOR

BMW

HONDA

KTM

SUZUKI

TRIUMPH

LeoVince



LEOVINCE LV-10 TITANIUM RACING DNA

Developed in collaboration with the LeoVince Racing Department and applying the experience gained in the Moto 2 and Moto 3 championships, the **LV-10 Titanium** expresses the best racing technology applied to an exhaust terminal intended for stock motorbikes.

The silencer and the manifold are made using Titanium Grade 1, a pure material with high characteristics of ductility, strength and corrosion resistance while it guarantees a 30% weight reduction compared to stainless steel. TIG welding is done entirely by hand and underline the craftsmanship of the product while retaining its racing DNA.

FEATURES

- ✓ Entirely Made in Titanium Grade 1
- ✓ Weight Reduced by 30% Compared to the Stainless Steel Version
- ✓ Hand Made TIG Weldings
- ✓ Laser Etched LeoVince Logo
- ✓ Laser Cut Bracket



AVAILABLE FOR

APRILIA

BMW

HONDA

KAWASAKI

SUZUKI

YAMAHA



LEOVINCE

LV-10

RACING DNA

The **LV-10** is the slip-on that we developed in collaboration with the best Moto2 and Moto3 teams and that comes directly from our experience in MotoGP and SBK racing. We designed an exhaust system with extremely compact dimensions to grant maximum lightness, the best performance and the unmistakable LeoVince racing sound. Manufactured entirely from AISI 304 stainless steel, the LV-10 body sports a matte finishing and a laser etched LeoVince logo. The rear stainless steel mesh embellishes the shot blasted end cap giving an extreme racing look.

FEATURES

- ✓ AISI 304 Stainless Steel
- ✓ Shot Blasted End Cap
- ✓ Matte Finishing
- ✓ Rear Stainless Steel Mesh
- ✓ Laser Etched LeoVince Logo
- ✓ Laser Cut Bracket



AVAILABLE FOR

APRILIA	BENELLI	BMW	DUCATI	HONDA	HUSQVARNA	KAWASAKI
KTM	SUZUKI	YAMAHA				



LEOVINCE

LV-10 BLACK EDITION

RACING DNA

With the **LV-10 BLACK EDITION**, LeoVince is introducing a beautiful black with a matte finish, made using a ceramic painting extremely resistant to high temperatures.

Manufactured entirely from AISI 304 stainless steel, the **LV-10 BLACK EDITION** body sports a matte finishing and a laser etched LeoVince logo. The rear stainless steel mesh embellishes the shot blasted end cap giving an extreme racing look.

FEATURES

- ✓ AISI 304 Stainless Steel
- ✓ Shot Blasted End Cap
- ✓ Metallic Ceramic-Based Black Paint with a Matte Finishing
- ✓ Rear Stainless Steel Mesh
- ✓ Laser Etched LeoVince Logo
- ✓ Laser Cut Bracket



AVAILABLE FOR

APRILIA

BENELLI

BMW

DUCATI

HONDA

HUSQVARNA

KAWASAKI

KTM

SUZUKI

YAMAHA



LEOVINCE LV PRO

COMPACT POWER

The LeoVince **LV PRO Stainless Steel** is the perfect combination between racing look and compactness. The LV PRO slip-on is the result of the LeoVince research of the best materials and craftsmanship. **LV PRO Stainless Steel** sports a new aggressive and racing look with its "Shark Cut" end cap, which, combined with the small size, fully enhances the aesthetics of your bike.

FEATURES

- ✓ AISI 304 Stainless Steel Sleeve
- ✓ Carbon "Shark Cut" End Cap with Matte Clear Coating for UV Resistance
- ✓ High Temperature Resistant Packing (900 °C - 1,650 °F)
- ✓ Full Carbon Fastening Strap
- ✓ Laser Etched LeoVince Logo



AVAILABLE FOR

DUCATI

HONDA

KAWASAKI

KTM

KYMCO

SUZUKI

TRIUMPH

YAMAHA



LEOVINCE LV PRO

COMPACT POWER

The LeoVince **LV PRO Carbon Fiber** is the perfect combination between racing look and compactness. The LV PRO slip-on is the result of the LeoVince research of the best materials and craftsmanship. **LV PRO Carbon Fiber** sports a new aggressive and racing look with its "Shark Cut" end cap, which, combined with the small size, fully enhances the aesthetics of your bike.

FEATURES

- ✓ Full Carbon Sleeve
- ✓ Carbon "Shark Cut" End Cap with Matte Clear Coating for UV Resistance
- ✓ Matte Finishing
- ✓ High Temperature Resistant Packing (900 °C - 1,650 °F)
- ✓ Full Carbon Fastening Strap



AVAILABLE FOR

DUCATI

HONDA

KAWASAKI

KTM

SUZUKI

TRIUMPH

YAMAHA



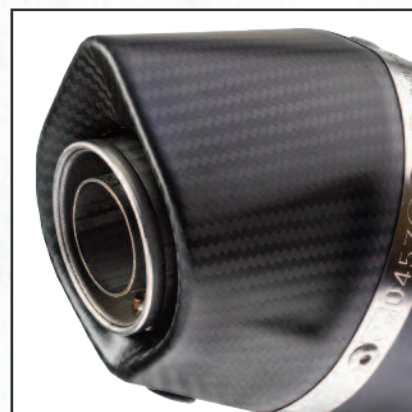
LEOVINCE NERO

JOIN THE DARK SIDE

Aggressive style and sharp lines. **LeoVince Nero** is the new muffler for motorbikes and maxi-scooters with a dark and modern look, the result of LeoVince's constant research of quality steels and exclusive processes.

FEATURES

- ✓ AISI 304 Stainless Steel Sleeve
- ✓ Carbon End Cap with Matte Clear Coating for UV Resistance
- ✓ Metallic Ceramic-Based Black Paint
- ✓ Matte Finishing
- ✓ Laser Etched LeoVince Logo



AVAILABLE FOR

BMW	DUCATI	HONDA	HUSQVARNA	KAWASAKI	KTM	KYMCO
PEUGEOT	PIAGGIO	SUZUKI	TRIUMPH	VESPA	YAMAHA	

e pass

STAINLESS
STEEL



LEOVINCE LV ONE EVO BLACK EDITION

TRADITION AND INNOVATION

The new **LV ONE EVO BLACK EDITION** Stainless Steel is the synthesis between tradition and modernity. It combines the LeoVince classic style looks and innovation in the research of the most performing and lightweight materials. The **LV ONE EVO BLACK EDITION** sports a matte black finishing.

FEATURES

- ✓ AISI 304 Stainless Steel
- ✓ Carbon "Slash Cut" End Cap with Matte Clear Coating for UV Resistance
- ✓ Black Ceramic-Based Painting
- ✓ Matte Black Finishing
- ✓ High Temperature Resistant Packing (900 °C - 1,650 °F)
- ✓ Full Carbon Fastening Strap
- ✓ Laser Etched LeoVince Logo



AVAILABLE FOR

YAMAHA

LeoVince



LEOVINCE LV ONE EVO

TRADITION AND INNOVATION

The new **LV ONE EVO Stainless Steel** is the synthesis between tradition and modernity. It combines the LeoVince classic style looks and innovation in the research of the most performing and lightweight materials.

FEATURES

- ✓ AISI 304 Stainless Steel Sleeve
- ✓ Carbon End Cap with Matte Clear Coating for UV Resistance
- ✓ High Temperature Resistant Packing (900 °C - 1,650 °F)
- ✓ Adjustable Full Carbon Fastening Strap
- ✓ Laser Etched LeoVince Logo



AVAILABLE FOR

APRILIA	BENELLI	BMW	DUCATI	GILERA	HONDA	HUSQVARNA
KAWASAKI	KTM	MBK	PEUGEOT	PIAGGIO	SUZUKI	SYM
TRIUMPH	VESPA	YAMAHA				



LEOVINCE LV ONE EVO

TRADITION AND INNOVATION

LV ONE EVO Carbon is the synthesis between tradition and modernity.

It combines the LeoVince classic style looks and innovation in the research of the most performing and lightweight materials.

FEATURES

- ✓ Two Layers Pre-Preg Full Carbon Sleeve
- ✓ Carbon End Cap with Matte Clear Coating for UV Resistance
- ✓ Matte Finishing
- ✓ High Temperature Resistant Packing (900 °C - 1,650 °F)
- ✓ Adjustable Full Carbon Fastening Strap



AVAILABLE FOR

BENELLI	BMW	DUCATI	HONDA	KAWASAKI	KTM	SUZUKI
TRIUMPH	YAMAHA					



LEOVINCE FACTORY S

RACING ATTITUDE

Italian spirit and fighting soul.

All combined with a titanium look. The **LeoVince Factory S Stainless Steel** exhaust is the essence of LeoVince's research, which adapts the know-how developed in competition with each model to which the **Factory S Stainless Steel** is intended.

FEATURES

- ✓ Conical Shape Sleeve
- ✓ AISI 304 Stainless Steel Sleeve
- ✓ Carbon End Cap with Matte Clear Coating for UV Resistance
- ✓ High Temperature Resistant Packing (900 °C - 1,650 °F)
- ✓ Adjustable Full Carbon Fastening Strap
- ✓ Laser Etched LeoVince Logo



AVAILABLE FOR

APRILIA	BMW	HONDA	KAWASAKI	KTM	KYMCO	SUZUKI
TRIUMPH	YAMAHA					



LEOVINCE FACTORY S

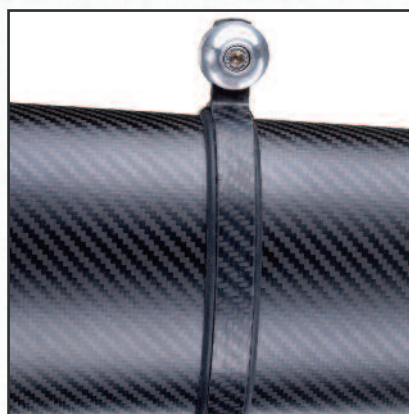
RACING ATTITUDE

Italian spirit and fighting soul.

All combined with a dark look. **The LeoVince Factory S Carbon Fiber** exhaust is the essence of LeoVince's research, which adapts the know-how developed in competition with each model to which the **Factory S Carbon** is intended.

FEATURES

- ✓ Conical Shape Sleeve
- ✓ Two Layers Pre-Preg Full Carbon Sleeve
- ✓ Matte Finishing
- ✓ Carbon End Cap with Matte Clear Coating for UV Resistance
- ✓ High Temperature Resistant Packing (900 °C - 1,650 °F)
- ✓ Adjustable Full Carbon Fastening Strap



AVAILABLE FOR

APRILIA

BMW

HONDA

KAWASAKI

KTM

SUZUKI

TRIUMPH

YAMAHA



LEOVINCE UNDERBODY

UNDER-ENGINE, ABOVE THE LINES

The LeoVince **UNDERBODY** is designed to emphasize the structure of each motorbike. The **UNDERBODY** is positioned under the crankcase, with the exit directed towards the outside, to optimize the weight distribution and to make the best use of the vehicle's center of gravity.

FEATURES

- ✓ AISI 304 Stainless Steel Sleeve
- ✓ Carbon End Cap with Matte Clear Coating for UV Resistance
- ✓ High Temperature Resistant Packing (900 °C - 1,650 °F)
- ✓ Laser Etched LeoVince Logo
- ✓ Maintains the Original Weight Distribution of the Bike



AVAILABLE FOR

KAWASAKI

KTM

YAMAHA



LEOVINCE GP ONE

RACING LOOK

The **GP One** is the new LeoVince slip-on inspired by the racing world. The compact design is enriched with precious elements such as the metallic ceramic-based black paint, the laser-etched LeoVince logo and the modern shot blasted end cap. The high tech details are combined with an unmistakable sound to give to your bike an extremely racing look.

FEATURES

- ✓ AISI 304 Stainless Steel
- ✓ Metallic Ceramic-Based Black Paint
- ✓ Matte Finishing
- ✓ Shot Blasted End Cap
- ✓ Laser Etched LeoVince Logo
- ✓ Laser Cut Bracket



AVAILABLE FOR

BENELLI

DUCATI

HONDA

HUSQVARNA

KTM



LEOVINCE GP DUALS

TWICE THE SOUL

The **GP Duals** is the new LeoVince slip-on inspired to the "GP" style, specifically developed for those who love customizing their bike with an exclusive product.

Indeed, LeoVince has created with high quality materials an exhaust with unmistakable sound and aggressive design.

FEATURES

- ✓ AISI 304 Stainless Steel
- ✓ Matte Finishing
- ✓ Shot Blasted End Cap
- ✓ Laser Etched LeoVince Logo
- ✓ Easy to Install



AVAILABLE FOR

BMW

DUCATI

HONDA

HUSQVARNA

KAWASAKI

SUZUKI

YAMAHA



LEOVINCE GP STYLE STAINLESS STEEL & BLACK EDITION

FROM MOTOGP WITH LOVE

The **GP STYLE** and **GP STYLE BLACK EDITION** design is based on LeoVince's experience with the leading teams and technicians of the top class and provides the best combination of quality, performance and price for those who want to customize their motorbikes quickly and with few modifications while staying in full compliance with EU regulations.

FEATURES

- ✓ AISI 304 Stainless Steel
- ✓ Full Carbon Bracket
- ✓ "Titanium Look" or Matte Black, Shot Blasted Finishing
- ✓ High Temperature Resistant Packing (900 °C - 1,650 °F)
- ✓ Laser Etched LeoVince Logo



AVAILABLE FOR

DUCATI

KAWASAKI

KTM

SUZUKI

TRIUMPH

YAMAHA



LEOVINCE GP CORSA MATTE MATTE FINISH

The **GP CORSA MATTE** combines the racing features of the GP CORSA line with a more modern and aggressive look. The double layer of pre-preg carbon of the muffler body is made with a matte finish that enhances the shapes and makes the black deeper and more intense. The "full carbon" bracket enhances the silencer, reducing the weight to further increase performance.

The LeoVince GP CORSA exhausts have always been the most loved for the "small" 4-stroke motorcycles. From today the line is enriched with one more version: the **GP CORSA MATTE**, which combines the double layer of carbon with an elegant and aggressive matte finish, with a dark charm.

FEATURES

- ✓ Double Layer of Pre-Preg Carbon
- ✓ Matte Finishing
- ✓ Bracket in "Full Carbon"
- ✓ "Slash Cut" End-Cap
- ✓ Non-Street Legal Muffler with DB-Killer
Supplied in the Box



AVAILABLE FOR

HONDA

KAWASAKI

YAMAHA



LEOVINCE GP CORSA SLASH CUT

The LeoVince **GP CORSA** silencers offer the perfect balance between look, performance and price for the 4 stroke motorcycles up to 500cc. Inspired by the LeoVince experience in MotoGP, the design resumes the "Slash Cut" style which characterizes the premier class.

To enhance the silencer, an alloy LeoVince logo has been applied which highlights the Italian product design.

FEATURES

- ✓ Two Layers Pre-Preg Full Carbon Sleeve
- ✓ Shining Finishing
- ✓ AISI 304 Stainless Steel Fastening Strap
- ✓ "Slash Cut" End-Cap



AVAILABLE FOR

HONDA

KAWASAKI

SUZUKI

YAMAHA



LEOVINCE GP CORSA EVO

MATTE CARBON

The LeoVince **GP CORSA EVO** silencers offer the perfect balance between look, performance and price for the 4-stroke motorcycles up to 500cc. Inspired by the LeoVince experience in MotoGP, LeoVince developed a full carbon silencer with matte finishing and high performance Technopolymer end cap. To enhance the silencer, an alloy LeoVince logo has been applied which highlights the Italian product design.

FEATURES

- ✓ Two Layers Pre-Preg Full Carbon Sleeve
- ✓ Matte Finishing
- ✓ AISI 304 Stainless Steel Fastening Strap
Rubber Damper
- ✓ High Performance Technopolymer End Cap



AVAILABLE FOR

HONDA

KAWASAKI

SUZUKI

YAMAHA



LEOVINCE EXHAUST TIP

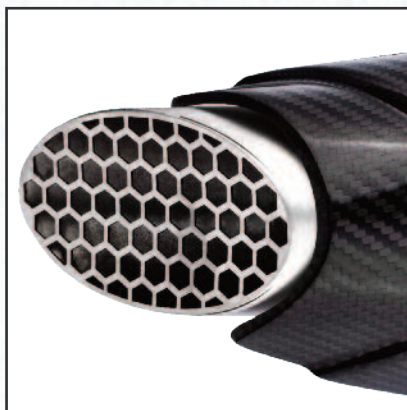
MOTOGP STYLE

Designed for a more aggressive look, the LeoVince **EXHAUST TIP** is the additional slip-on inspired by MotoGP.

Thanks to its shape and visible TIG welds, the LeoVince **EXHAUST TIP** adds a touch of sporty style.

FEATURES

- ✓ MotoGP Look
- ✓ AISI 304 Stainless Steel
- ✓ Laser Etched LeoVince Logo
- ✓ Full Carbon Heat Shield



AVAILABLE FOR

YAMAHA



LEOVINCE

CLASSIC RACER

STAINLESS STEEL & BLACK EDITION

CAFÉ RACER

With the **CLASSIC RACER**, LeoVince has developed an exclusive product that fits well with the modern Urban Racer style. **CLASSIC RACER** is a tribute to the café culture.

Thanks to its unique style dedicated to the "Classics", innovative materials and the LeoVince experience, the **CLASSIC RACER** gives the bike its "vintage" style

FEATURES

- ✓ AISI 304 Stainless Steel
- ✓ Classic "Retro" Sound
- ✓ End Cap with Brushed Finish
- ✓ Embossed LeoVince Logo
- ✓ Easy to Install



AVAILABLE FOR

HONDA

MOTO GUZZI

TRIUMPH



LEOVINCE

UNIVERSAL MUFFLER KIT

CUSTOMIZE YOUR MOTORCYCLE

LeoVince has developed a special range of **universal muffler kits** dedicated to meet the needs of the best customizers but also of end users who wish to customize their own special.

The **universal muffler kit**, available in different lines, finishes and diameters, is supplied without manifold but including bracket and mounting hardware.

FEATURES

- ✓ Available in Different Diameters
- ✓ Bracket and Mounting Hardware Included in the Kit
- ✓ Manifold not Supplied
- ✓ Provided with High Temperature Resistant LeoVince Sticker





LEOVINCE X3

SON OF MUD

LeoVince has always been present in the Enduro world with its product, and the LeoVince Enduro silencers exploit the technology and the know-how acquired through the development of exhaust-systems for competition.

FEATURES

- ✓ Semi-Direct Chamber Internal Structure
- ✓ High Resistance Aluminum Sleeve
- ✓ Full Carbon Fastening Strap
- ✓ Laser Etched LeoVince Logo



AVAILABLE FOR

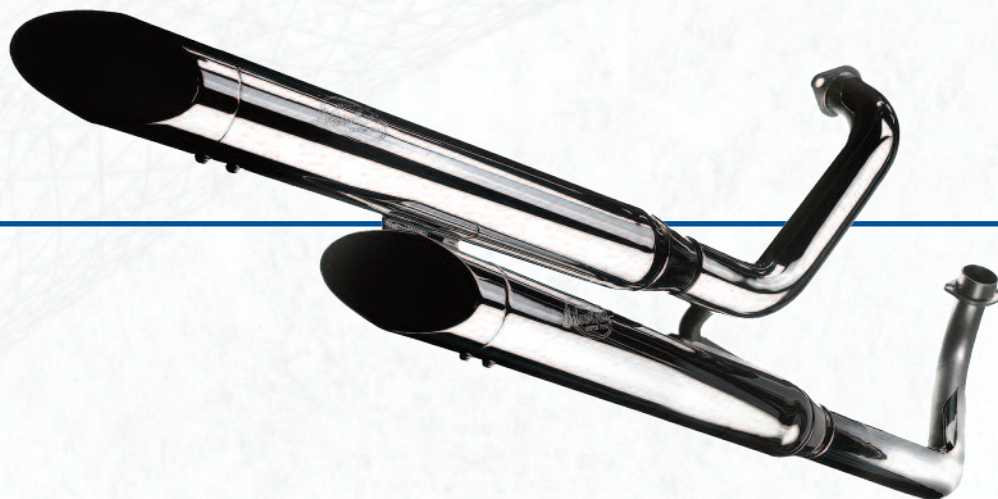
BMW

KAWASAKI

KTM

SUZUKI

YAMAHA



LEOVINCE SILVERTAIL K02

STYLE AND PERFORMANCE

Who has said that custom can't be synonymous with performance?

SilverTail doesn't spare effort in research, development and design, wanting to give an even wider interpretation of the "custom" world, understood as a design product but with high performance.

SilverTail brings in Europe the real American "metric cruisers" style.

FEATURES

- ✓ Fully Chromed Steel Body
- ✓ Removable Inner Part of the Muffler
- ✓ Chrome Heat Shield Casing Cover



AVAILABLE FOR

HONDA

HYOSUNG

KAWASAKI

SUZUKI

YAMAHA



LEOVINCE X-FIGHT

ROAD AND OFF-ROAD

The aggressive and innovative style has always characterized LeoVince **X-FIGHT**, the exhaust conceived for 2 stroke 50cc engines destined for both off-road and road motorcycles.

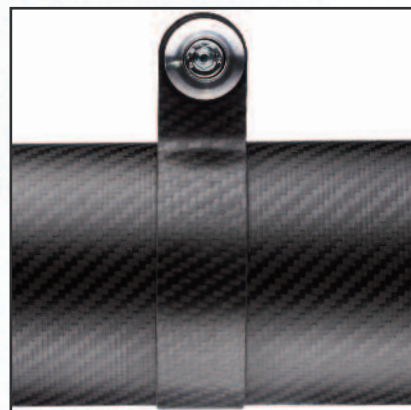
From today the line is enriched with the **X-FIGHT CARBON** version, the evolution of this great classic. The body in "full carbon", formed by two layers of pre-preg carbon fiber, is synonymous with lightness and gives to the exhaust a darker and more aggressive look.

The bracket is also made in "full carbon" for maximum lightness and best performance.

The exhaust also features a sticker with the LeoVince logo, to emphasize the all-Italian design.

FEATURES

- ✓ ECE-Approved Silencer with Carbon Fiber Outer Shell
- ✓ Racing Expansion Chamber in Steel with Transparent Paint Finishing
- ✓ Hand Made TIG Weldings
- ✓ "Full Carbon" Bracket



AVAILABLE FOR

BETA

DERBI



LEOVINCE X-FIGHT STAINLESS STEEL & BLACK EDITION

ROAD AND OFF-ROAD

For all 2-stroke 50cc engines destined for off-road and street, LeoVince developed the Hand Made **X-Fight Stainless Steel or Black Edition**, an E-Approved system, perfect for anyone who wants to customize their bike with a new and aggressively-styled product.

FEATURES

- ✓ Steel Expansion Chamber with Transparent Paint Finishing
- ✓ AISI 304 Stainless Steel Repackable Silencer
- ✓ Hand Made TIG Weldings
- ✓ Full Carbon Fastening Strap
- ✓ Laser Etched LeoVince Logo



AVAILABLE FOR

APRILIA	BETA	DERBI	GILERA	HM	MBK	RIEJU
YAMAHA						



LEOVINCE

HAND MADE TT STAINLESS STEEL & BLACK EDITION

DESIGN AND QUALITY FOR YOUR SCOOTER

Designed from the experience in the motorcycles' world, LeoVince **HAND MADE TT** and **HAND MADE TT BLACK EDITION** are the top range of sporting exhaust systems which combines high performance and quality design at a competitive price level.

FEATURES

- ✓ Steel Expansion Chamber with Transparent Paint Finishing
- ✓ Steel Silencer with Aluminum Sleeve
- ✓ Hand Made TIG Weldings
- ✓ Roller Weights and CVT Springs Included (When Shown in the User Manual)
- ✓ Brushed Aluminium or Matte Black Finishing
- ✓ Designed to Enhance 2-Stroke Engine Performance



AVAILABLE FOR

APRILIA	CPI	EXPLORER	GENERIC	GILERA	KEEWAY	KYMCO
MALAGUTI	MBK	PEUGEOT	PIAGGIO	QJ	RIDE	YAMAHA



LEOVINCE TOURING

A GREAT CLASSIC

LeoVince **Touring** is one of the most complete exhaust ranges for the motor scooter sector. Incorporating a futuristic design, it has remained practical thanks to the modern-styled plastic heat protection casing.

FEATURES

- ✓ Conical Expansion Structure
- ✓ Plastic Heat Protection Casing
- ✓ Expansion Body Made of 10/10 Steel
- ✓ High Temperature Resistant Electrostatic Painting Treatment



AVAILABLE FOR

APRILIA

GILERA

KYMCO

MALAGUTI

MBK

PEUGEOT

PIAGGIO

VESPA

YAMAHA



LEOVINCE SITO

TWIN CHAMBERS

SITO is a line of replacement silencers very similar to the original products, but built with Sito materials and quality. They are identical in external appearance to the OEM system, while their internal construction was redesigned to improve performance.

FEATURES

- ✓ Steel Replacement Exhaust with the Renowed SITO Quality
- ✓ High Temperature Resistant Electrostatic Painting Treatment
- ✓ Plastic Heat Protection Casing



AVAILABLE FOR

APRILIA	BAOTIAN	BENELLI	CPI	DERBI	EXPLORER	GENERIC
GILERA	HONDA	KEEWEY	KYMCO	MALAGUTI	MBK	PEUGEOT
PIAGGIO	QUINGQUI	QJ	REX MOTO	RIDE	ROOK	SUKIDA
SUZUKI	VESPA	YAMAHA				



LEOVINCE SITOPUS

BETTER PERFORMANCE

SITOPUS for 2 -stroke engine is an exhaust system line for best-selling motorcycles and scooters in Europe that, while looking like those originally fitted, are completely re-designed in the internal structure and guarantee a better performance to the engine, especially at low-medium RPMs

FEATURES

- ✓ High Performance Steel Replacement Exhaust
- ✓ O.E. Look
- ✓ Heat Shield in Nylon PA66
- ✓ HighTemperature Resistant Electrostatic Painting Treatment



AVAILABLE FOR

APRILIA	BETA	GILERA	HONDA	ITALJET	LML	MALAGUTI
MBK	PEUGEOT	PIAGGIO	TOMOS	VESPA	YAMAHA	